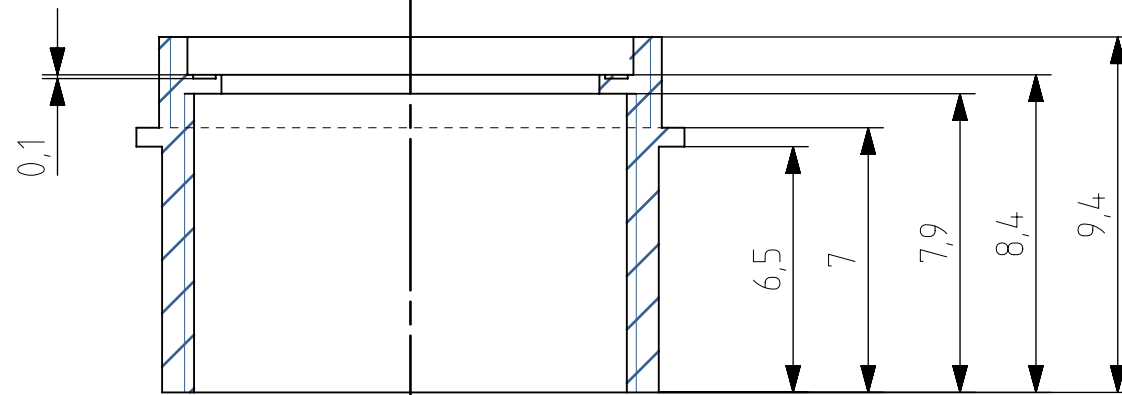
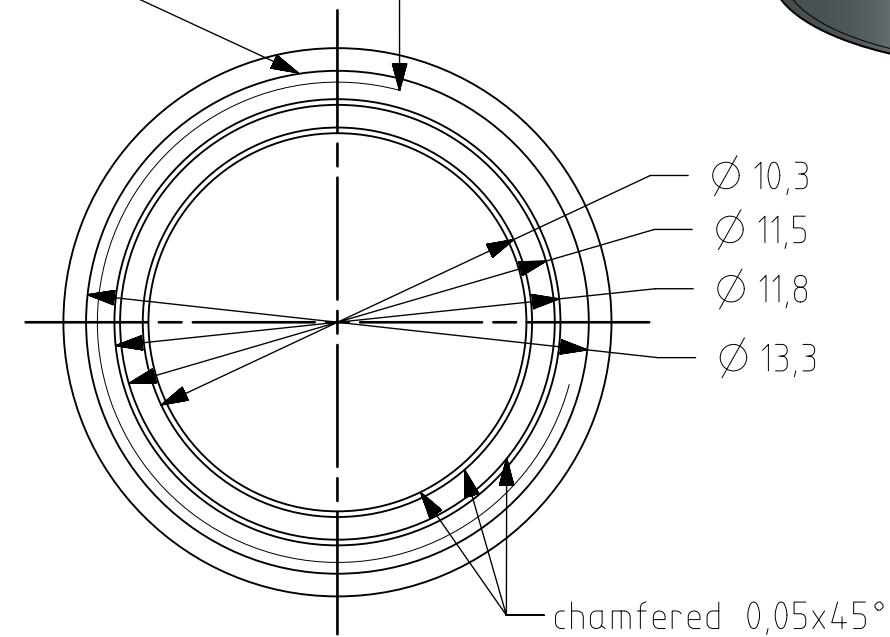
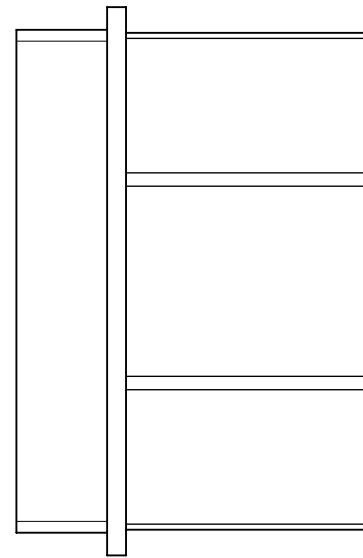
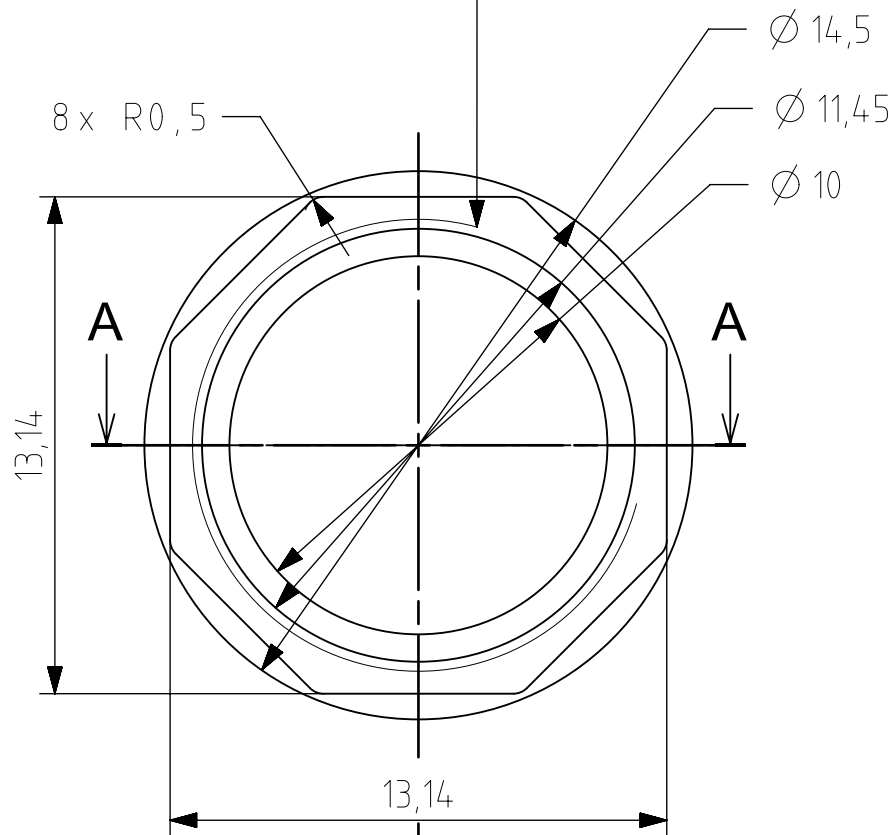
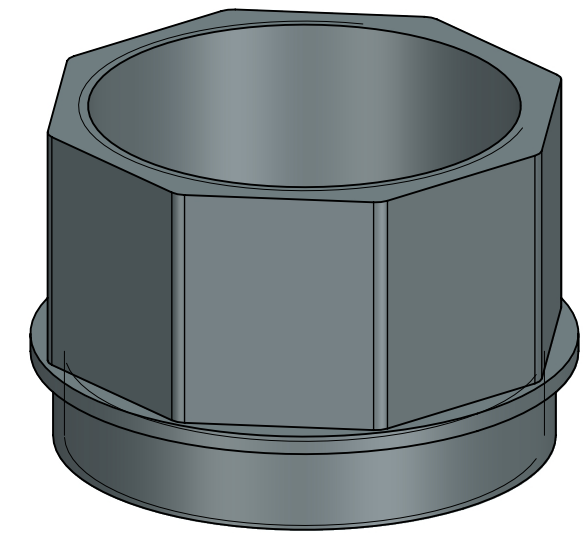


Custom inside thread for M12 lens
 Major diameter: 11,95
 Minor diameter: 11,45
 Pitch: 0,5
 $\nabla 7,9$
 chamfered 0,4x45°

Custom outside thread for MECH-MU181-FRONT
 Major diameter: 13,3 +0.00/-0.05
 Minor diameter: 12,7 +0.00/-0.05
 Pitch: 0,5
 $\nabla 2,4$
 chamfered 0,6x45°

REV1-B

∇ 0.05



SECTION A-A

1. All linear and radius dimension tolerances according ISO 2768-1 tolerance class f (fine) unless noted otherwise
2. True to size after anodization
3. Before anodizing sandblasting needed
4. Coating anodized- DIN 17611-E6, color - EV6(black) the faintness according to reference samples
5. Thread must be functional after coating (thread may be coated)
6. All edges chamfered 0,15x45° unless noted otherwise

| REVISION TABLE | | |
|----------------|-------------|--|
| REV1 | GS 20191015 | ORIGINAL PART |
| REV1-B | GS 20201012 | Update tolerance field for Outside threaded hole |

| | | | | | | | | | | |
|-------------|----------|---------------------|-----------|---------------|------------------------|---------------------|---------------|-------------------|---------------|--------|
| Date: | 20191015 | Name: | GS | PN: | MECH-MU181-ADPT-L | Customer PN: | NA | Surface Quality: | Ra 0.8 | |
| Designed | 20191015 | GS | | | | Material: | ENAW6061 | Surface Finish: | OPTICAL BLACK | |
| Drawn | 20201012 | GS | | | | Angle of projection | | Weight: | | |
| Approved | 20201012 | GS | | Project Class | MECH-MU181-ADPT-L-REV1 | Units: | mm | Scale: | 5:1 | |
| QC | 20201012 | GS | | | | Format | A3 | | | |
| MFGP | 20201012 | GS | | | Top Level Assembly | Doc Type: | PART REVISION | DOCUMENT REVISION | B | |
| Department: | R&D | Default tolerances: | ISO2768-f | Change | Date | Name | Page: | 1 of 1 | | |
| | | | | | | | EU | REV1 | B | 1 of 1 |
| | | | | | | | Document Nr: | | | |

This drawings is the property of XIMEA s.r.o. No use thereof shall be made other than as a reference for proposals as submitted to XIMEA s.r.o. for jobs to be executed in conformity with such proposals unless the consent of said XIMEA s.r.o. has previously been obtained. No part of this drawing shall be copied or duplicated or its contents disclosed. The information contained on this drawing is confidential and proprietary.