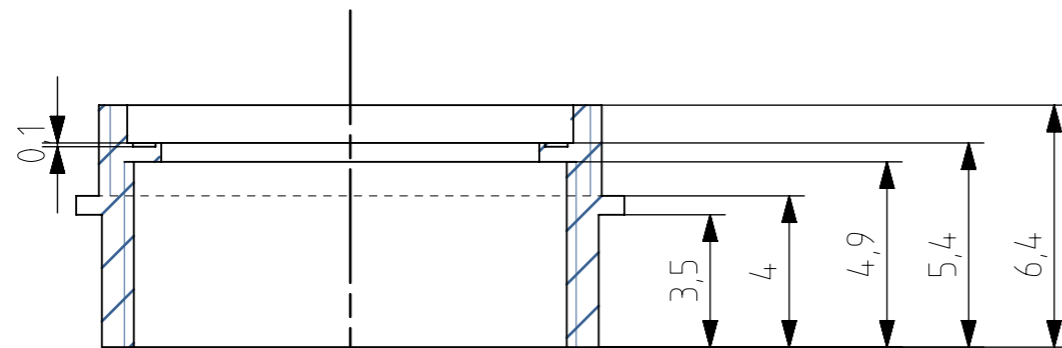
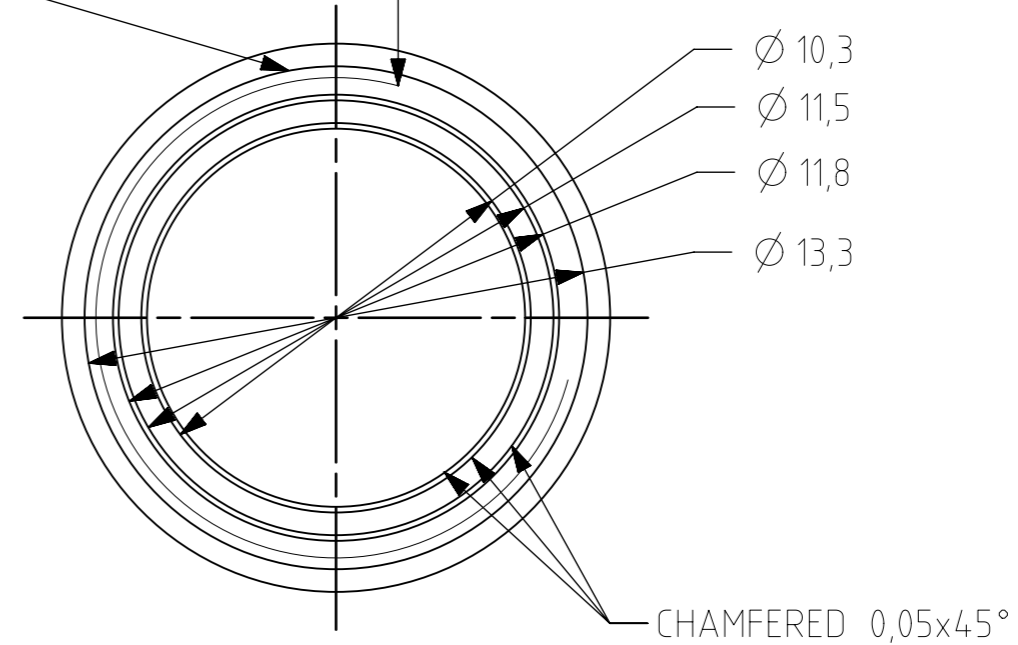
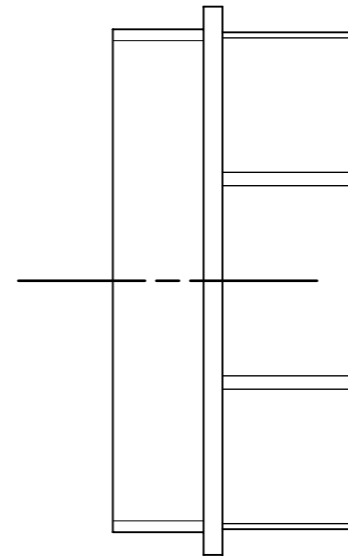
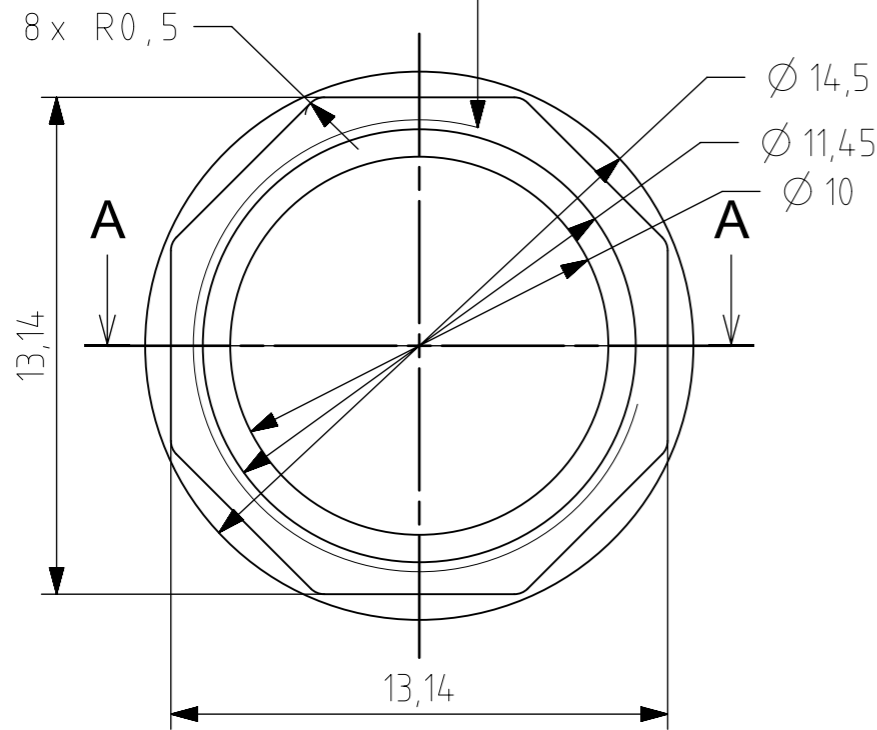
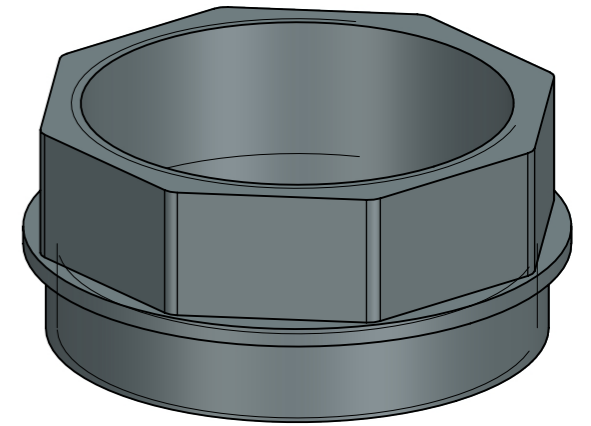


Custom inside thread for M12 lens
 Major diameter: 11,95
 Minor diameter: 11,45
 Pitch: 0,5
 $\nabla 4,9$
 chamfered 0,4x45°

Custom outside thread for MECH-MU181-FRONT
 Major diameter: 13,3 +0.00/-0.05
 Minor diameter: 12,7 +0.00/-0.05
 Pitch: 0,5
 $\nabla 2,4$
 chamfered 0,6x45°

REV1-B

$\sqrt{0.05}$



SECTION A-A

1. All linear and radius dimension tolerances according ISO 2768-1 tolerance class f (fine) unless noted otherwise
2. True to size after anodization
3. Before anodizing sandblasting needed
4. Coating anodized- DIN 17611-E6, color - EV6(black) the faintness according to reference samples
5. Thread must be functional after coating (thread may be coated)
6. All edges chamfered 0,15x45° unless noted otherwise

REVISION TABLE		
REV1	GS 20191015	ORIGINAL PART
REV1-B	GS 20201012	Updated tolerance field for outside threaded hole

Date:	20191015	Name:	GS	PN:	MECH-MU181-ADPT-M	Customer PN:	NA	Surface Quality:	Ra 0.8	
Designed	20191015	Drawn	20201012	GS		Material:	ENAW6061	Surface Finish:	OPTICAL BLACK	
Approved	20201012	QC	20201012	GS	Project Class	MECH-MU181-ADPT-M-REV1	Angle of projection	Weight:		
MFPG	20201012	GS			Top Level Assembly		Units:	Scale: 5:1	Format	
Department:	R&D	Default tolerances:	ISO2768-f	Change	Date	Name	mm		A3	
Document Nr:							Doc Type:	PART REVISION	DOCUMENT REVISION	Page:
ximea							EU	REV1	B	1 of 1

This drawings is the property of XIMEA s.r.o. No use thereof shall be made other than as a reference for proposals as submitted to XIMEA s.r.o. for jobs to be executed in conformity with such proposals unless the consent of said XIMEA s.r.o. has previously been obtained. No part of this drawing shall be copied or duplicated or its contents disclosed. The information contained on this drawing is confidential and proprietary.